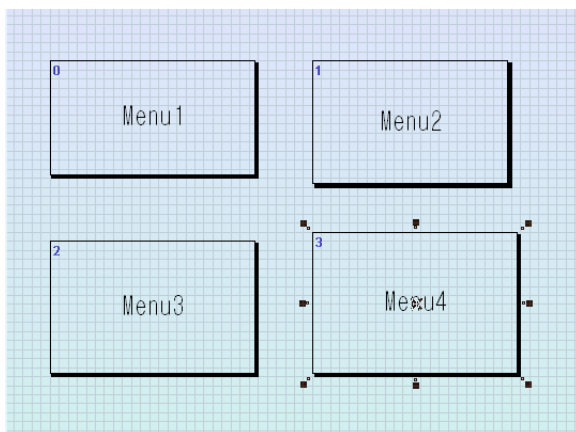
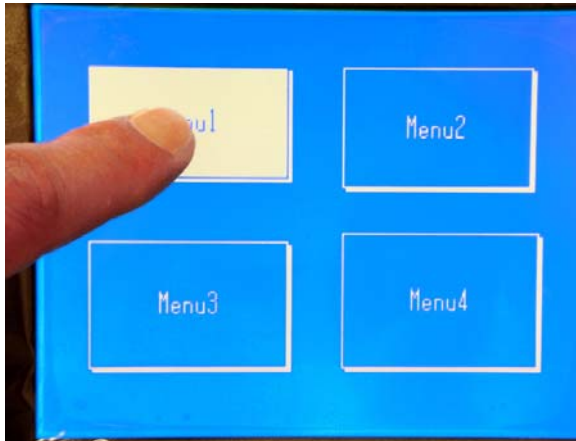


# Quick Start Guide 2

Let's make the touch buttons do something w/ I/Os!



1) So you were able to make buttons now, but the buttons are not doing anything, to make it exciting, let's just enable some I/O ports.



[original menu, compare with above pics!]

```

Const Device = CT1720

Dim Tx1 As Integer, Ty1 As Integer
Dim ct As Byte

Quick1

Set Pad 0,4,5
On Pad Gosub GETTOUCH

Do
Loop

GETTOUCH:
Tx1=Getpad(2)
Ty1=Getpad(2)

If Menucheck(0,Tx1,Ty1)=1 Then
  Pulsout 18,300
  Menureverse 0
Elseif Menucheck(1,Tx1,Ty1)=1 Then
  Pulsout 18,300
  Menureverse 1
Elseif Menucheck(2,Tx1,Ty1)=1 Then
  Pulsout 18,300
  Menureverse 2
Elseif Menucheck(3,Tx1,Ty1)=1 Then
  Pulsout 18,300
  Menureverse 3

End If

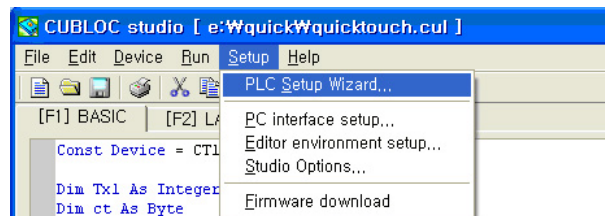
Return

End

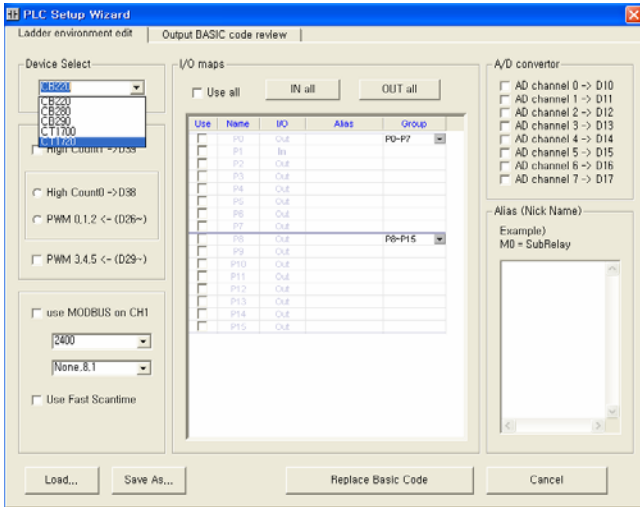
#include "menus.inc"
  
```

2) So last time, we made some code as shown on the left side here. We can make some small changes to activate the I/Os on the CuTOUCH.

3) We must first setup the I/O ports to input or output. Let's cheat a little by using the PLC Wizard capability of CublocStudio.

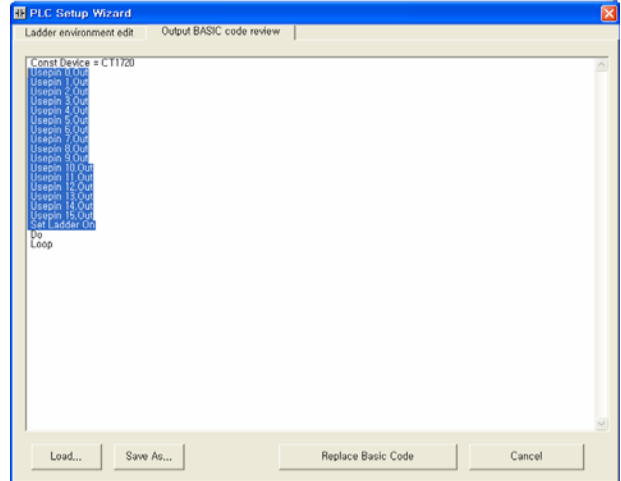


4) Here, select the Device Select to be CT1720 since we are using CT1720.

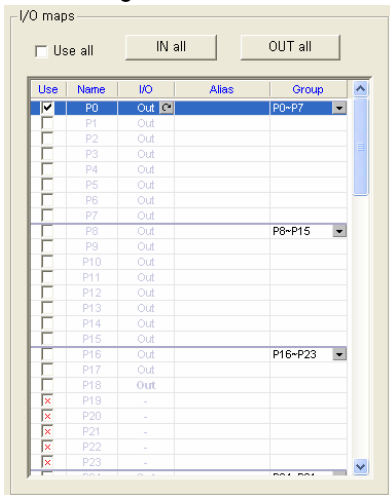


6) Click on this Tab, Output BASIC code review.

7) Simply select the code like shown below using your mouse.

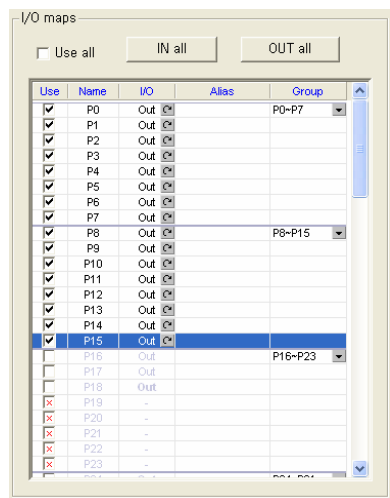
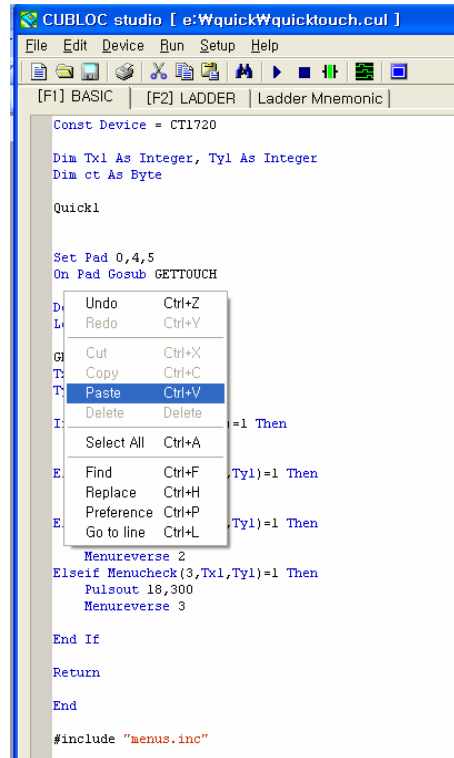


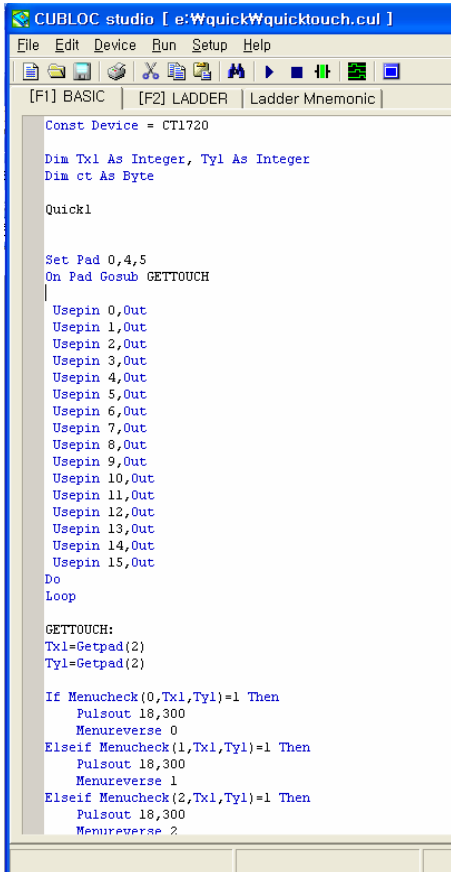
5) Now select P0 through P15 to be checked like shown here:



8) Now do a right click and choose "copy" OR press (Ctrl key + C) simultaneously.

9) Press on Cancel and Go back to CublocStudio editor and paste the code before the Do Loop like shown here:





```
CUBLOC studio [ e:\Wquick\Wquicktouch.cul ]
File Edit Device Run Setup Help
[ F1 ] BASIC [ F2 ] LADDER | Ladder Mnemonic |

Const Device = CT1720

Dim Tx1 As Integer, Tyl As Integer
Dim ct As Byte

Quick1

Set Pad 0,4,5
On Pad Gosub GETTOUCH
|
Usepin 0,Out
Usepin 1,Out
Usepin 2,Out
Usepin 3,Out
Usepin 4,Out
Usepin 5,Out
Usepin 6,Out
Usepin 7,Out
Usepin 8,Out
Usepin 9,Out
Usepin 10,Out
Usepin 11,Out
Usepin 12,Out
Usepin 13,Out
Usepin 14,Out
Usepin 15,Out
Do
Loop

GETTOUCH:
Tx1=Getpad(2)
Tyl=Getpad(2)

If Menucheck(0,Tx1,Tyl)=1 Then
Pulsout 18,300
Memreverse 0
Elseif Menucheck(1,Tx1,Tyl)=1 Then
Pulsout 18,300
Memreverse 1
Elseif Menucheck(2,Tx1,Tyl)=1 Then
Pulsout 18,300
Memreverse 2
```

10) Now click on this button 